



MONTHLY MEMBERSHIP PROGRESS REPORT

District 322 E

Results as of: 01/31/2018

GMT: SWADESH RANJAN SAHA

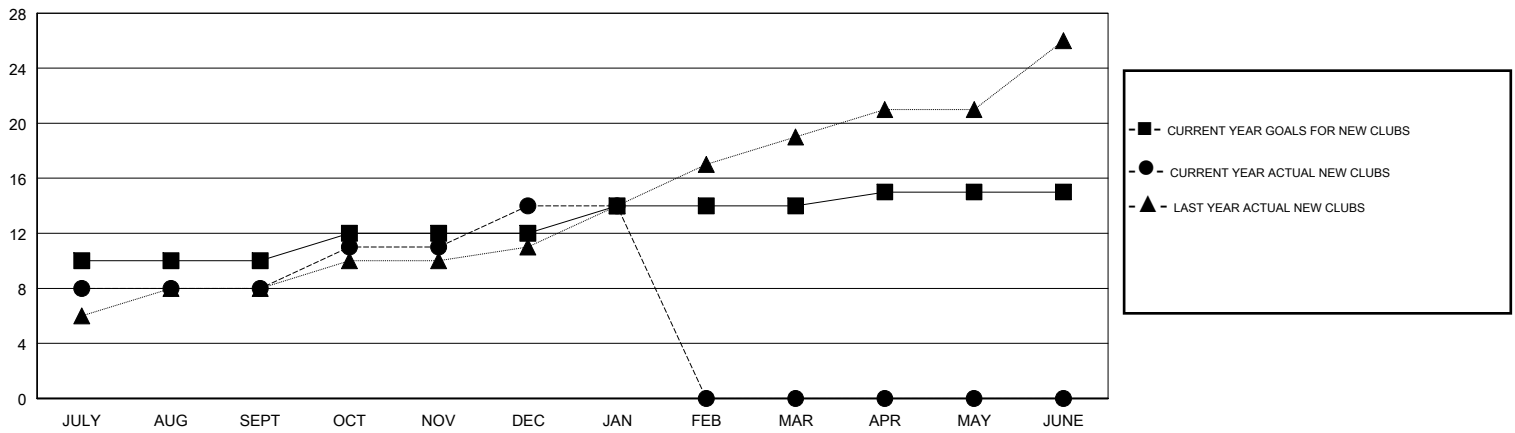
LOCATION INDIA

GMT CA

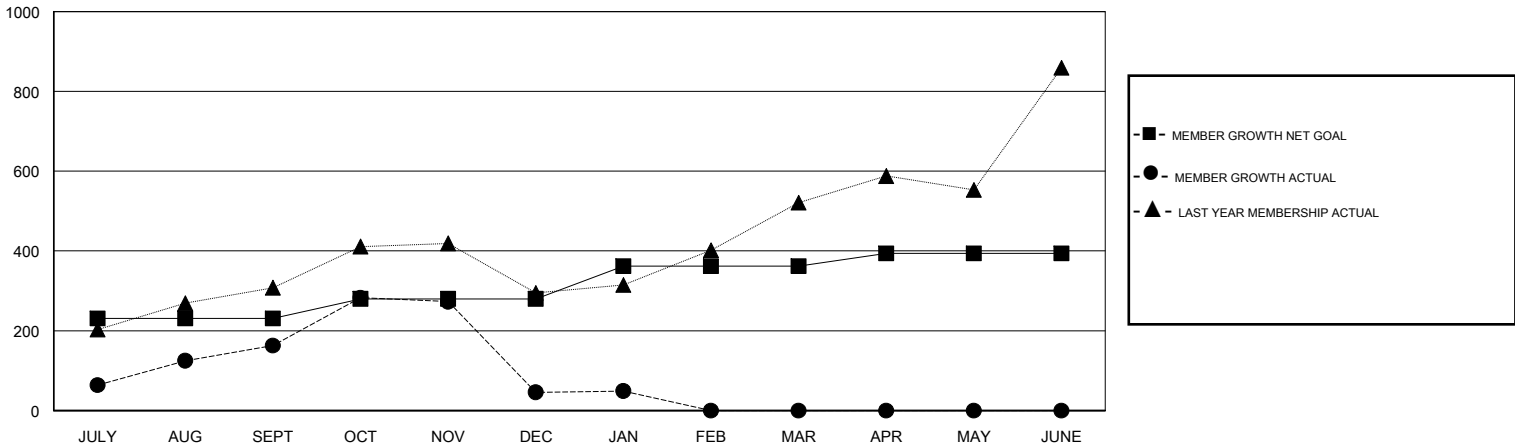
Clubs			
RESULTS FOR 2017-2018			
QUARTER	NEW CLUB GOAL	NEW CLUBS	DROPPED CLUBS
JULY/AUG/SEPT	10	8	1
OCT/NOV/DEC	2	6	11
JAN/FEB/MAR	2	0	0
APR/MAY/JUNE	1	0	0

Members			
RESULTS FOR 2017-2018			
QUARTER	MEMBER GROWTH NET GOAL	MEMBER GROWTH ACTUAL	DROPPED MEMBERS ACTUAL (including transfers)
JULY/AUG/SEPT	231	385	197
OCT/NOV/DEC	49	237	350
JAN/FEB/MAR	82	55	50
APR/MAY/JUNE	32	0	0

GOALS AND ACTUAL NEW CLUBS CUMULATIVE



GOALS AND ACTUAL MEMBERS CUMULATIVE



DROPPED CLUBS: 12	61 CLUBS OF 130 ADDED 1 OR MORE NEW MEMBERS	<u>GENDER DISTRIBUTION</u>	
DROPPED MEMBERS		MALE	2,586 (68.00%)
DECEASED	5	FEMALE	1,217 (32.00%)
CLUB CANCELLED	301	Women Percentage Fiscal Year Goal: 30%	
OTHER	291	TOTAL FAMILY UNIT MEMBERS	1,425
TOTAL	597	FAMILY MEMBERS PAYING HALF DUES	743

[CLICK HERE FOR CUMULATIVE MEMBERSHIP DATA](#)